

Lincoln County
Comprehensive Plan



Agricultural Suitability

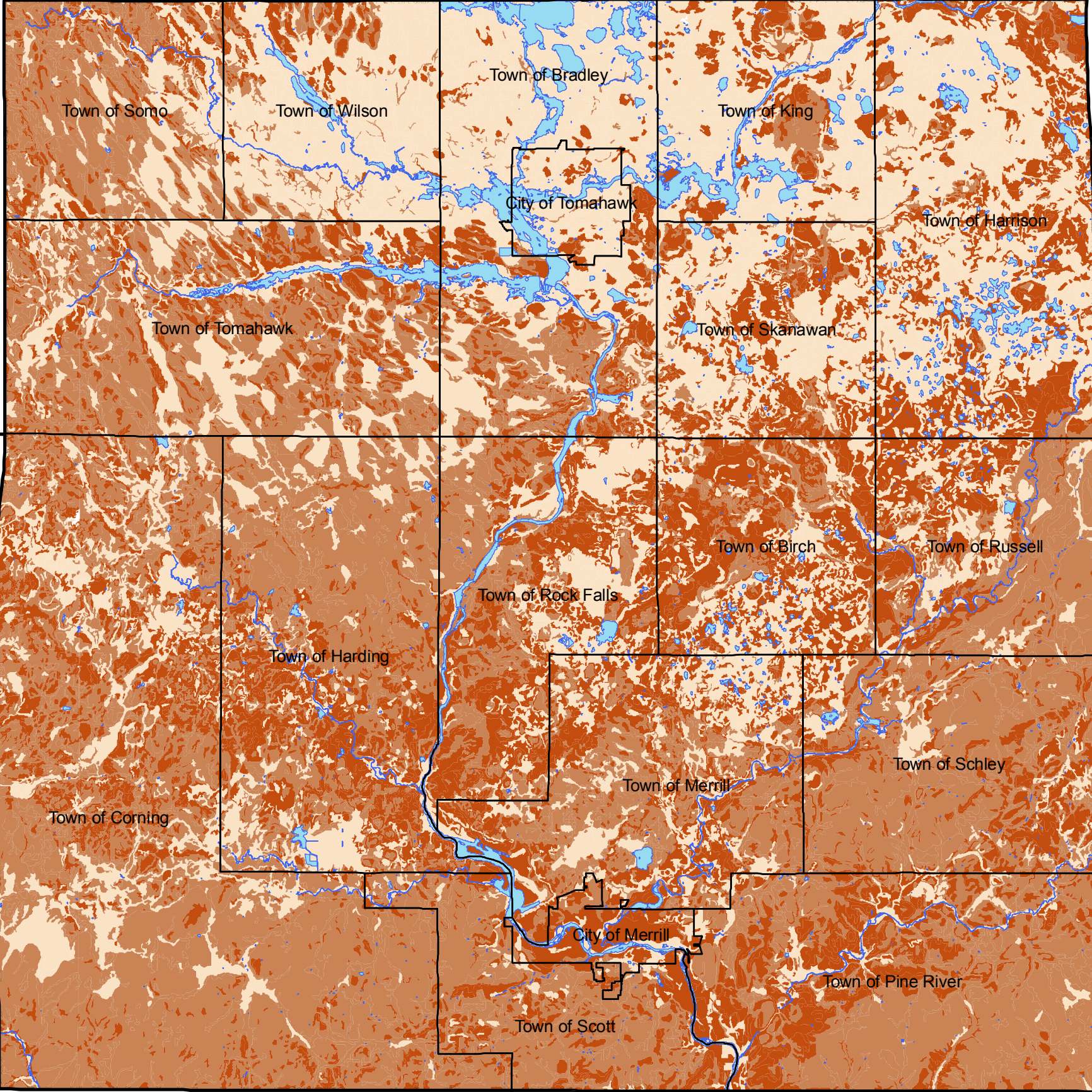
- Municipalities
- Lakes and Rivers
- County Boundaries
- Farmland Soils**
 - Prime Farmland¹
 - Prime Farmland if Drained²
 - Not Prime Farmland

Note 1: Prime farmland, as defined by the U.S. Department of Agriculture, is the land is best suited to food, feed, forage, fiber, and oilseed crops. It may be cultivated land, pasture, woodland, or other land, but is not urban or built up land or water areas.

Note 2: Prime Farmland if drained are soils that are prime when drainage measures have been implemented.



The information depicted on this map is a compilation of public record information including aerial photography and other base maps. No warranty is made, express or implied, as to the accuracy of the information used. The data layers are a representation of current data to the best of our knowledge and may contain errors. It is not a legally recorded map and cannot be substituted for field-verified information. Map may be reproduced with permission of the Lincoln County Land Information and Conservation Department. Errors should be reported Land Information and Conservation Department, 801 North Sales Street, Merrill, WI, 54452. Copyright © 2011 Phone (715) 539-1049



Oneida

Langlade

Marathon

Price

Taylor